



**PEREGRINE**  
GLOBAL SERVICES

# MEANINGFUL DATA RESULT IN MEANINGFUL IMPACT

## Quick Guide to Peregrine's Reports & Client Admin

# 15 Reports

Our knowledge-based assessment solutions provide you with 16 reports to help you impact quality in education. We believe your data belong to you. Therefore, you have unlimited access to all data and reports. Discover the reports available and take a closer look at some of our most popular and newest report features below.

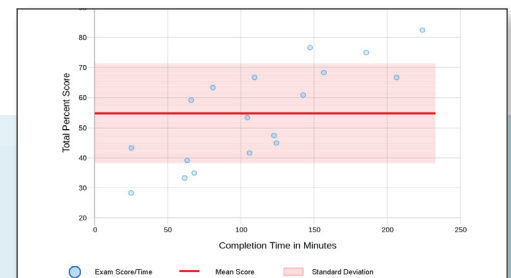
- Individual Results Report
- Pairwise Report
- Pairwise Executive Summary Report
- Learner Comparison Report
- Internal Analysis Report
- Internal Analysis Executive Summary Report
- External Comparison Report
- External Comparison Executive Summary Report
- Program/Cohort Report
- Longitudinal Report
- Student/Exit Survey Report
- Gap Analysis Report
- Grade Scale Report
- Response Distractors Report
- Aggregate Extraction
- Client Schools in Aggregate



## Internal Analysis Report

With the Internal Analysis Report, you can easily compare Inbound (beginning of a program) to Outbound (end of a program) exam scores. Additionally, you can view your programmatic data at the topic and subject levels, allowing you to pinpoint potential gaps in knowledge.

The Completion Time in Minutes graph displays any outliers to be filtered out so your data accurately reflect your learners' retained knowledge.



Internal Analysis Report — Peregrine University												
Bachelors Business Administration												
Management - Inbound Exam Summary												
Subject	Result for the Program's Cohort			Only for the Selected Sampled Pool			Percentile Rank for the Selected Sampled Pool			Percentile Rank for the Selected Sampled Pool		
	No. Questions	Frequency Correct	Frequency Incorrect	No. Questions	Frequency Correct	Frequency Incorrect	Percentile Rank	Percentile Rank	Percentile Rank	Percentile Rank	Percentile Rank	
Comprehensive Introduction	20	50.00%	10.00%	20.00%	44.00%	76.00%	75	35.00%	36.47%	43.00%	50.00%	
Corporate Culture and Ethics	15	60.00%	5.00%	15.00%	44.00%	76.00%	75	35.00%	42.00%	47.00%	53.00%	
Cost Control	21	52.38%	8.57%	21.00%	43.00%	77.00%	75	34.00%	42.00%	47.00%	53.00%	
Data Analysis Tools	11	27.27%	8.18%	11.00%	39.00%	78.00%	75	32.00%	36.00%	43.00%	49.00%	
HR Manager Roles and Responsibilities	16	68.75%	2.50%	16.00%	47.00%	73.00%	75	40.00%	41.00%	43.00%	48.00%	
HR Planning	13	69.23%	2.31%	13.00%	45.00%	74.00%	75	40.00%	40.00%	44.00%	50.00%	
Individual and Group Dynamics	14	50.00%	7.14%	14.00%	47.00%	79.00%	75	40.00%	40.00%	51.00%	57.00%	
Organizational Chart and Structure	11	45.45%	3.64%	11.00%	40.00%	77.00%	75	33.00%	36.00%	42.00%	47.00%	
Organizational Mission, Vision, and Values	19	63.16%	2.63%	19.00%	41.00%	76.00%	75	35.00%	36.00%	45.00%	51.00%	
Quality Management	9	55.56%	2.22%	9.00%	38.00%	77.00%	75	31.00%	37.00%	42.00%	47.00%	
Recruiting and Selection of Employees	14	64.29%	2.14%	14.00%	42.00%	74.00%	75	42.00%	42.00%	52.00%	59.00%	
Staffing Decisions	17	58.82%	2.94%	17.00%	42.00%	77.00%	75	40.00%	51.00%	56.00%	63.00%	
Summary	160	60.11%	3.89%	160.00%	44.00%	77.00%	75	40.00%	40.00%	47.00%	53.00%	

Frequently correct values in this table are rounded to whole display. To view the raw values, please select the Exam version of this report.

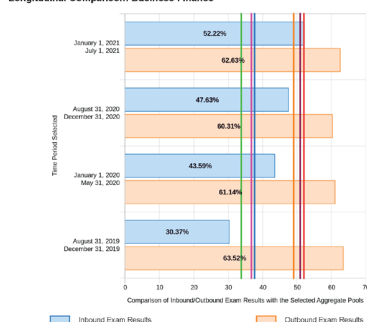
\*Please note that either the aggregate pool sample and/or school sample for this data set is relatively low for the Percentile Rank Calculation.

Selected Aggregate Pool Located Inside the U.S.

The Exam Summary provides the number of questions offered to your students and the frequency correct. You can use these data to set goals associated with percentiles based on the selected aggregate comparison.

## Longitudinal Report — Peregrine University Bachelors Business Administration

### Longitudinal Comparison: Business Finance



Date Range	Number of Inbound Exams	Number of Outbound Exams	Difference	Change
Jan 1, 2021 - Jul 1, 2021	18	76	-10.41	19.03%
Aug 31, 2020 - Dec 31, 2020	36	127	-12.66	26.63%
Jan 1, 2020 - May 31, 2020	39	79	-17.55	40.25%
Aug 31, 2019 - Dec 31, 2019	27	91	-33.15	109.14%

March 17, 2022

Peregrine Global Services

7

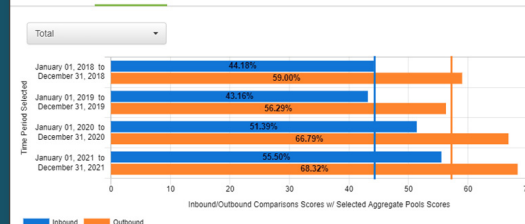
# Longitudinal Report

The Longitudinal Report includes a side-by-side comparison of the same exam over different exam periods. Up to four exam periods can be shown on the report. The report is most often used to evaluate academic change and to understand the trends over time. Understanding the effects of change leads to continuous quality improvement. The report is also used to help satisfy accreditation requirements associated with the number of data points to report.

The Client Admin Dashboard allows you to preview your report, giving you a quick and easy way to view, analyze, and copy & paste your graphs and tables.

## Longitudinal Analysis Report Preview

Selection Criteria Topic Scores Regression Analysis



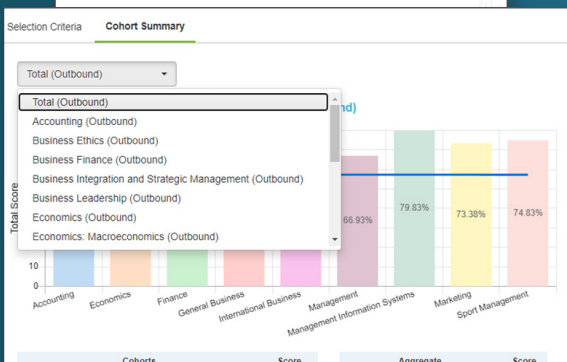
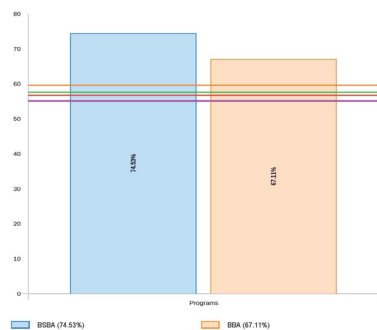
Aggregates				
Inbound		Outbound		
Located inside the U.S.		44.32%	57.23%	
Peregrine University				
Date Range	Number of Inbound Exams	Number of Outbound Exams	Difference	Change
January 01, 2018 - December 31, 2018	106	129	14.82	33.54%
January 01, 2019 - December 31, 2019	67	44	13.13	30.42%
January 01, 2020 - December 31, 2020	77	127	15.40	29.97%
January 01, 2021 - December 31, 2021	47	66	12.82	23.10%

## Program/Cohort Report — Peregrine University Bachelors Business Administration

### Program/Cohort Comparison: Outbound, Management: Organizational Behavior

Selected Aggregate Pools

- AACSB Members - The Assoc. to Advance Collegiate Schools of Business (55.09%)
- IAACSB (U.S.) - International Accreditation Council for Business Education (59.68%)
- Located inside the U.S. (57.62%)
- Privately Owned - Not-for-Profit (56.72%)
- Traditional/Campus-based Delivery Mode (55.19%)



# Program/Cohort Comparison Report

The Program/Cohort Comparison Report provides a side-by-side comparison of results between two or more programs or cohorts of learners. The report is most often used to determine what, if any, differences exist between the two or more groups. Examples include comparing the results from different campus locations, program delivery modalities, or program concentrations. In the preview feature of Client Admin, you can select a specific topic to better understand differences between the cohorts' retained knowledge.

# Gap Analysis Report

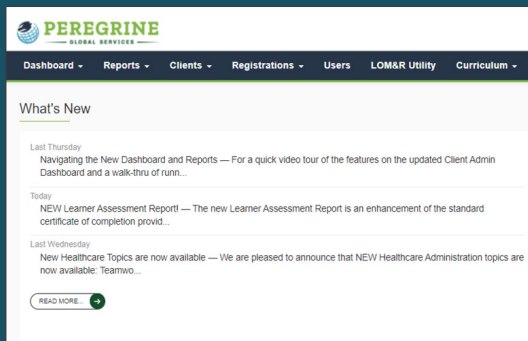
The Gap Analysis Report identifies potential learning gaps through a comparative analysis of topic and subject level data against one external benchmark, while summarizing program data over multiple exam periods.

[illegible]

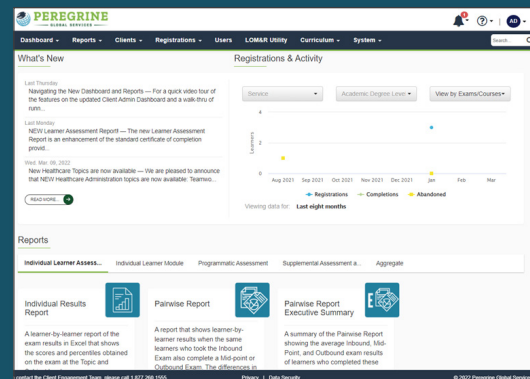
Potential knowledge gaps are color-coded at the topic and subject levels to draw attention to opportunities for improvement. Further analysis of response distractors provide opportunities to reinforce and develop student knowledge in key topic and subject areas.

# The New Client Admin Dashboard

You can now get caught up on the news and learn about new updates from Peregrine in the “What’s New” section of Client Admin.



You can also access your reports from the dashboard, and you can preview the data before running the report.



To learn more about how Peregrine helps you impact quality in education, contact us!

+1 (307) 685-1555

[Info@PeregrineGlobal.com](mailto:Info@PeregrineGlobal.com)  
[www.PeregrineGlobal.com](http://www.PeregrineGlobal.com)

