



Healthcare Administration

Academic Programmatic Assessment



Quality Education Produces Quality Care

When you impact the quality of education, you are developing leaders in healthcare administration. Continuous quality assurance is a commitment and requires time. We have made it simpler. Peregrine Global Services provides you with a nationally normed, summative assessment solution. With our solution, you can access the data you need to conduct efficient internal and external programmatic evaluation.

Schedule a
tour of this
solution today!

PeregrineGlobal.com/schedule/

Designed for You

Our assessment solution is designed to address the topics and learning outcomes most relevant to healthcare administration programs today and to meet accreditation and certification requirements of CAHME and AUPHA.



Online & Secure

You can assess your students online without a proctor. Our advanced security features lend to reliable and valid assessment results. Assessments are easy to integrate within your LMS, or we will build a school-branded microsite.



Customizable

With 23 available healthcare administration topics to choose from, you can easily customize your assessment to align with your program's key learning objectives. Also, you can customize assessments to meet program specialization needs.



Data & Reports

Our assessment is more than an exam - it is a comprehensive solution. You will receive access to all institutional and individual assessment data and reports. The intuitive reporting system provides you with an easy way to view your results and progress.

CONTACT US

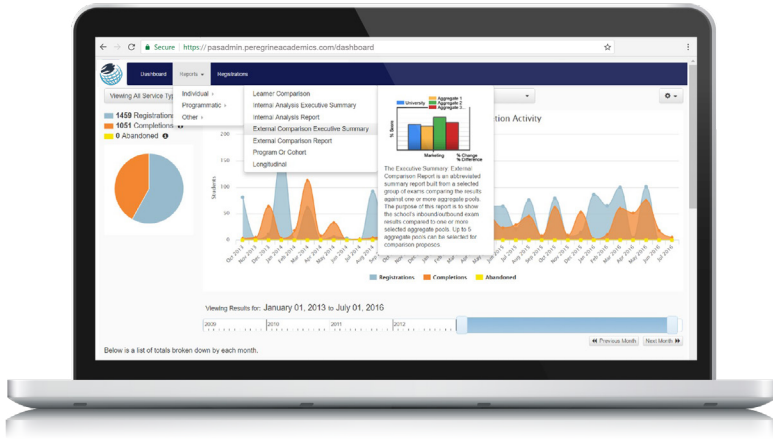
|| Info@PeregrineGlobal.com

|| (307) 685-1555 ||

PeregrineGlobal.com



PEREGRINE
GLOBAL SERVICES



Results and Reporting

School officials have 24/7 access to student results and reporting through Client Admin. Reports are used for academic benchmarking and learning outcomes evaluation.

The site includes:

- Student registration management.
- Access to completion certificates and individual scores.
- Summative reports for comparative analysis.

Exam Content

The test bank offers 23 available healthcare administration topics with a separate test bank available for the bachelor's, master's, and doctoral level. An exam includes 10 questions per topic, randomly selected from the test bank of more than 3,000 questions.

Communications and Relationship Management

- + Communication Skills
- + Facilitation and Negotiation
- + Relationship Management

Leadership

- + Communication Vision
- + Leadership Skills and Behavior
- + Managing Change
- + Organizational Climate and Culture

Professionalism

- + Contributions to the Community and Profession
- + Personal and Professional Accountability
- + Professional Development and Lifelong Learning

Knowledge of the Healthcare Environment

- + Healthcare Personnel
- + Healthcare Systems and Organizations
- + The Community and the Environment
- + The Legal Environment of Healthcare Administration
- + The Patient's Perspective

Business Knowledge and Skills

- + Financial Management
- + General Management
- + Human Resource Management
- + Information Management
- + Organizational Dynamics and Governance
- + Quality Improvement
- + Risk Management
- + Strategic Planning and Marketing

Unmatched Support

You and all students will receive exceptional client support every step of the way. We take our responsibility as your thought-partner seriously. We are committed to providing you with the highest quality of service and support at all times.



For a full tour of this dynamic assessment resource, contact us today!

+1 (307) 685-1555

Info@PeregrineGlobal.com

PeregrineGlobal.com



Service Pricing

Service pricing is based on annual projections and includes access to all individual results, summative reports, and analytics.

Customization of assessment exams, client and technical support services, and Client Admin features and capabilities are all included in this one simple service pricing.

PRICING GUIDE		
SERVICES PER YEAR	PRICE PER EXAM	
	BA/BS/GRAD	AA/AS
1-100	\$45	\$23
101-500	\$40	\$20
501+	\$36	\$18